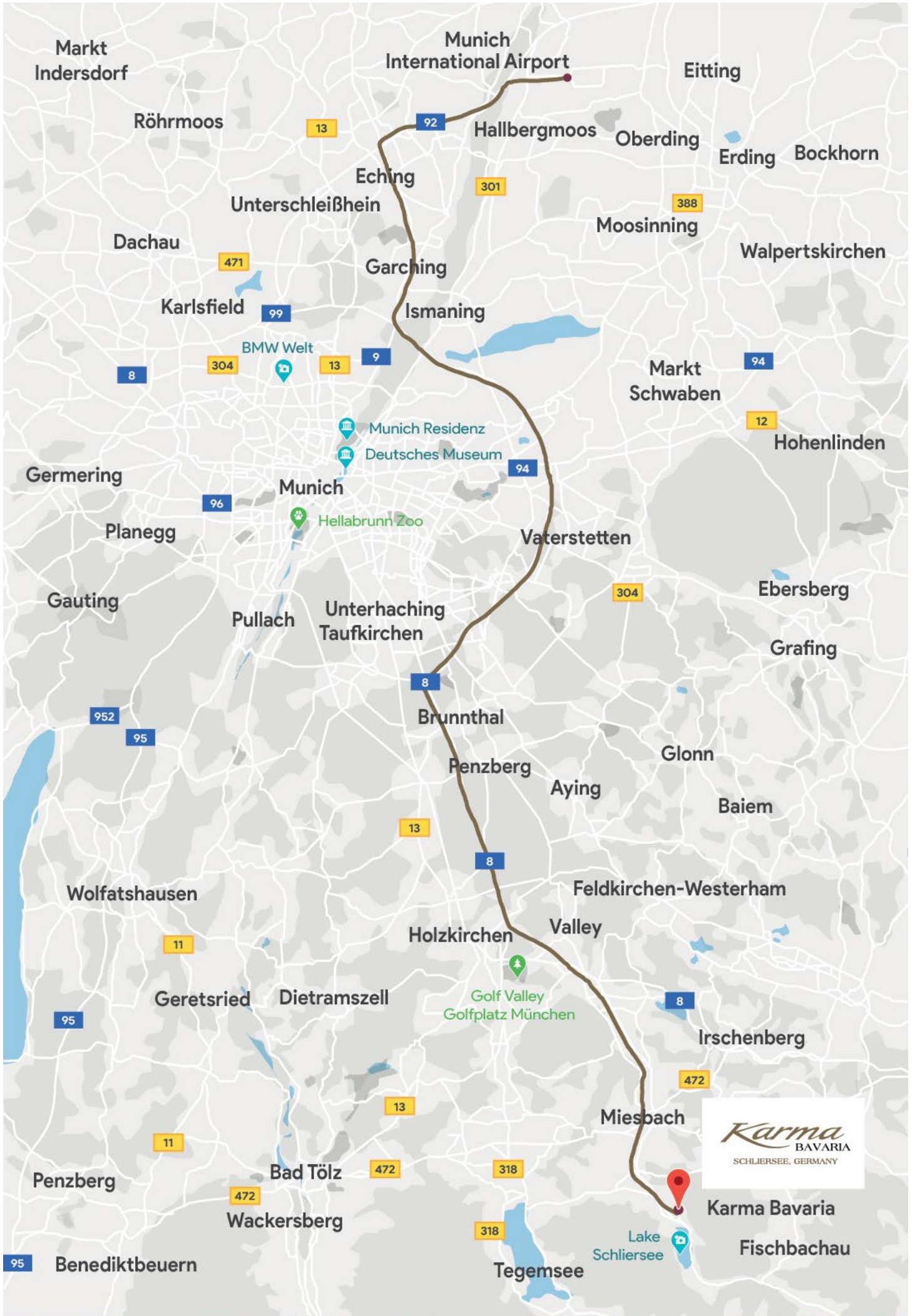


*Karma*  
BAVARIA  
SCHLIERSEE, GERMANY



DESTINATION PROFILE

WE CREATE... EXPERIENCES





## HOW TO GET THERE


### By Train

Take the suburban train S8 or S1 in the direction of Munich. Alight at “Donnersberger Brücke” station. Change to the local train “Bayerische Oberlandbahn – BOB”. Ensure that you are in the correct part of the train as it splits up into three separate journeys along its route. Enter the section with the destination “Bayrischzell” (indicated above the entrances). Alight from this train at Schliersee station. From the train station, Karma Bavaria is a short 15-minute stroll away, or if you give us a call, we will arrange a taxi to pick you up. The best ticket to get from Munich Airport to Schliersee is called the “Bayern Ticket” and can be purchased at the airport.

### By Car


From Munich Airport take motorway A92 in the direction of München and follow the signs to Salzburg A8. Get off the motorway at the exit labelled “Weyarn” and turn right onto the B307. Stay on this road for the next 18km until you reach Schliersee and take the first road to the left (after the traffic lights) and you will reach Karma Bavaria Schliersee.


We are happy to arrange a taxi to pick you up at Munich Airport from € 210  
(reduced rate for Karma Group Members from € 180).

 Taxi Services  
Taxi Pektas  
Ledererstrasse 2  
83714 Miesbach

Tel : +49 80 22 5071438  
+49 176 239 291 85

[www.taxipektas-wiessee.de](http://www.taxipektas-wiessee.de)  
[info@taxipektas-wiessee.de](mailto:info@taxipektas-wiessee.de)

 Car Rental Services  
[www.avis.de](http://www.avis.de)  
[www.sixt.de](http://www.sixt.de)  
[www.europcar.com](http://www.europcar.com)  
[www.hertz.com](http://www.hertz.com)  
[www.enterprise.de](http://www.enterprise.de)

 Where to buy groceries  
EDEKA  
Bahnhofstraße 8  
83727 Schliersee

Netto Marken-Discount  
Miesbacher Str. 14  
83727 Schliersee

BAVARIA ON THE PLATE



OUR TOP PICKS OF RESTAURANTS  
IN THE REGION





Restaurant Karmasee



Restaurant Karmasee



Restaurant Ratskeller

## Karmasee Restaurant

(International Cuisine)

Karma Bavaria's Karmasee restaurant is an ideal dining location, featuring the best in contemporary German and European cuisine with the occasional nod to Asian flavours as well.

**Open daily** from 7:00 - 10:00 / 12:00 - 15:00 / 18:30 - 21:30  
Kirchbichlweg 18 - 83727 Schliersee

---

Tel. 08026/6080 | [karmabavaria.com](http://karmabavaria.com)

---

## Restaurant Ratskeller

(Bavarian Cuisine)

With its cosy and down-to-earth interior, Ratskeller is a great place to experience excellent Bavarian fare. The restaurant has been open since 1874, so they've had plenty of time to perfect their offering. Enjoy local specialities from Munich and Franconia accompanied by Löwenbräu beers fresh from the tap and wines from Würzburger Juliuospital.

**Open daily** from 10:00 to 22:30  
Rathausstraße 1a - 83727 Schliersee

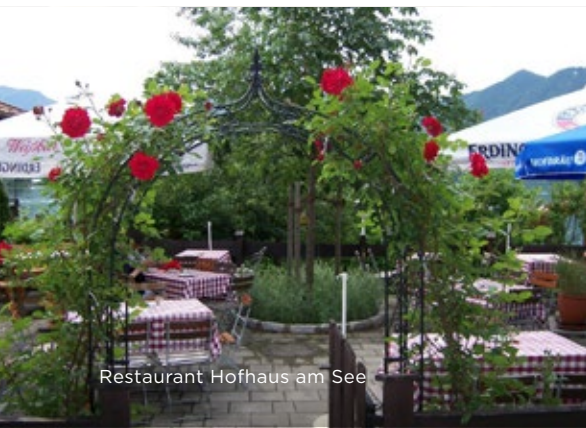
---

08026/9205800 | [www.ratskeller-schliersee.de](http://www.ratskeller-schliersee.de)

---



Restaurant Hofhaus am See



Restaurant Hofhaus am See



Restaurant zum Wurz

## Restaurant Hofhaus am See

(Bavarian Cuisine, Fresh Fish)

Built in the 17th Century, Hofhaus am See is another historic dining experience in the town of Schliersee. The restaurant offers local favourites cooked with heart by the Wagner family, including delectable duck.

**Open daily** 11:30 to 15:30 & 17:00 to 20:00

Mesnergasse 2 - 83727 Schliersee

---

08026/94499 | [www.hofhaus-am-see.de](http://www.hofhaus-am-see.de)

---

## Restaurant zum Wurz

(Grill specialties)

Restaurant zum Wurz specialises in proteins from the grill, including locally raised beef and pork. You'll find top-quality cuts from most of the best beef producing regions in the world, including Australia, Argentina and the USA.

**Opening Times** Wednesday until Sunday from 18:00 to 24:00

Osterhofen 13 - 83735 Bayrischzell

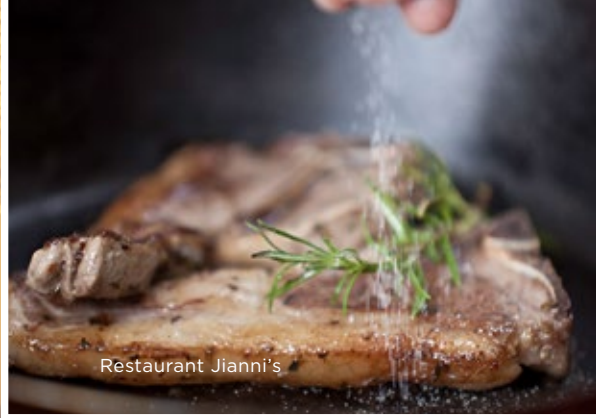
---

08023-8192979 | [www.zum-wurz.de/restaurant](http://www.zum-wurz.de/restaurant)

---



Restaurant Jianni's



Restaurant Jianni's



Restaurant Lahori

### **Bei Jianni's** (Greek cuisine)

Bei Jianni's serves flavourful Greek and Mediterranean cuisine in an Alpen setting. The presentation, quality and the taste - everything is just right. Enjoy hearty traditional Greek dishes including the house gyros.

**Open daily** from 11:30 to 14:00 & 17:00 - 23:00  
Bahnhofstraße 10 - 83727 Schliersee

---

08026/922480 | [www.jiannis-schliersee.de](http://www.jiannis-schliersee.de)

---

### **Restaurant Lahori** (Indian Cuisine)

For those looking for a spice hit Lahori is Schliersee's local Indian joint. Chow down on flavourful North and South bites from the sub-continent.

**Open daily** from 11:00 - 14:30 & 17:30 - 23:00  
Schlierseer Str. 2 - 83714 Miesbach

---

08025/9242323 | [www.restaurant-lahori.de](http://www.restaurant-lahori.de)

---

PLACES TO VISIT WHILE STAYING AT  
KARMA BAVARIA

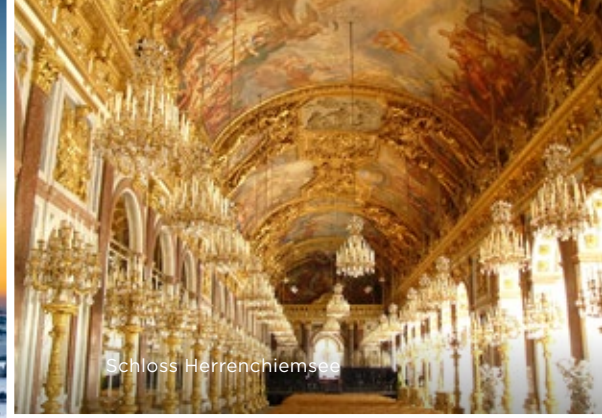
---



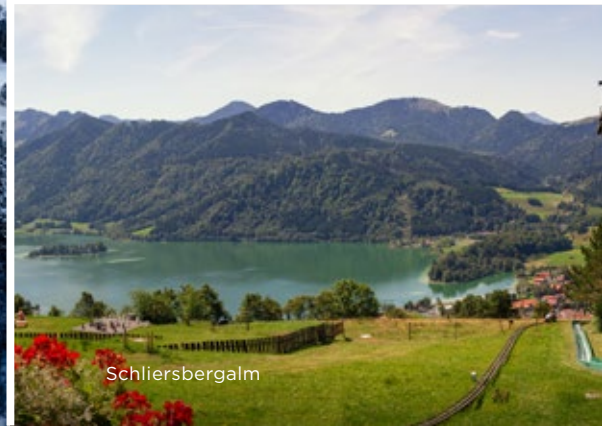




Castle Neuschwanstein



Schloss Herrenchiemsee



Schliersbergalm

### Castle Neuschwanstein

A fairytale comes to life, magnificent Neuschwanstein Castle started life as a rather extreme example of a lord's folly. The building was commissioned in the 19th Century by "Mad" King Ludwig. Unfortunately for the King, who paid for the castle out of his personal fortune, he died before he could enjoy his grand design. Since that time, Schloss Neuschwanstein has become one of Germany's most popular tourist attractions. Rising out of the Alpine forest near Fussen, its towering turrets were the inspiration for Walt Disney's Sleeping Beauty.

### Schloss Herrenchiemsee

Another of "Mad" King Ludwig's fantastical creations, the beautiful and ornate Royal Palace of Herrenchiemsee, or the New Palace, was both the largest and last of his famous building projects. Inspired by the ornate Versailles, the palace was a tribute for France's King Louis XIV, whom the Bavarian king much admired.

### Schliersbergalm

Take the scenic cable car from Schliersee to the ever-popular Schliersbergalm lookout. In about 4 minutes you'll reach an altitude of 1061m and along the way take in the magnificent views. Once up top you can open-air heated swimming pool, children's adventure playground (with three giant trampolines), and 9-hole miniature golf course.



Kehlsteinhaus - "Eagle's Nest"



Salzburg Night View



Salzburg Skyline

## Salzburg

Just across the border in Austria, the city of Salzburg has a long and storied history. Once the home of Mozart, the city's baroque heritage earned Salzburg a UNESCO Heritage listing however it's the city's thoroughly contemporary arts, dining and culture scene that's really drawing the crowds these days.

## Kehlsteinhaus

Once the mountain retreat of senior members of the Nazi Party during the dark era of Germany's Third Reich, Kehlsteinhaus - otherwise known as the Eagles Nest - perches on a sheer rock wall atop the summit of Kehlstein in the Bavarian Alps. It was constructed during the Third Reich as a status symbol, where Hitler and his cronies gathered there to make plans for war and impress foreign dignitaries. Today, it's a tourist site where visitors to the region can gain insight into some of the most important - and diabolical - events of the 20th Century.



Dawn at Lake Chiemsee



Lantenhammer Distillery



Deutsches Museum München

## Lake Chiemsee

A day trip to the stunning Lake Chiemsee is a must. Bavaria's largest lake offers a wealth of watersports and relaxing pastimes on and around the lake including the gilded grandeur of Herrenchiemsee Palace, which looms on an island in the heart of the lake.

## Deutsches Museum München

The German Museum Munich is a vast, interactive space with more than 30 exhibitions to explore. Whether you are into ships, planes, computers, toys, astronomy or mining, there are over 28,000 objects on display including the first motorised aircraft built by the Wright brothers, the U1 submarine, and the first program-controlled computer (Conrad Zuse's Z3).

## Lantenhammer Distillery

Less than 10 minutes' drive from Karma Bavaria, near the picturesque town of Schliersee, Lantenhammer Distillery is a third generation family-run enterprise producing potent potables such as brandies, fruity liqueurs, and Bavarian Gin. The best thing about an afternoon spent sipping Bavaria's best brandies is that afterwards Karma Bavaria's just a short stroll up the hill.

# HIGHLIGHTS OF BAVARIA





City of Munich



Spingitzsee Lake



Fischbachau Village

## Munich

Bavaria's state capital may be most well-known for Oktoberfest and its famed Christmas markets, but Munich offers much more than cultural kitsch to keep the avid visitor entertained. Each district has its own beauty and there's plenty to explore in international dining, arts and culture including the Deutsche Museum, the world's largest science and technology museum.

## Fischbachau

With a population of 6000 people, the municipality of Fischbachau nestles in the wide valley of the river Leitzach amidst Bavaria's natural beauty and framed by magnificent mountains. The municipality comprises of Birkenstein, Hammer-Aurach, Elbach, Hundham and Wörnsmühl, leading you into a particularly beautiful part of Bavaria. Recreation, relaxation and nature are the order of the day.

## Spitzingsee

At the first fall of snowflakes, Schliersee and its surrounds become a winter wonderland with winter sports enthusiasts heading straight for Spitzingsee, located at an altitude of 1,100 meters (where it snows even earlier and lasts longer, thanks to its elevation and modern artificial snow system).



## Waterfalls of Josefstal

Waterfalls are nature's Valium. The exceedingly lovely Josefstal Falls, reached by a gentle stroll through woodland near Schliersee Lake, resemble a tropical oasis (due to the spray) and are well worth a visit for those with relaxation on their minds. Afterwards, pop around the corner to Café Brunnhof to sample their fantastic array of delicious cakes.

This short moderate walking tour is ideal for families with children. The length of this path has 2,8 kilometres and you will arrive at the waterfalls of Josefstal - a wonderful valley near the lake Schliersee. Especially children and adults will love this track. Hiking maps rate this tour with two stars for condition and for technical skills with three stars. The landscape is astonishing (landscape: four stars) and the highest point is at 952 metres above the sea level, the lowest point is at 810 metres.

The walking path starts and ends at the "Josefstaler Strasse". This street you will find on the southern side of the Schliersee in Neuhaus. If you are planning to travel by train, jump on the Bayerische Oberlandbahn (BOB) at the main station in Munich. All day long every hour a train leaves to Schliersee / Fischhausen-Neuhaus. You also can travel by car. Just drive along the Autobahn A 8 until you reach the exit to Weyarn. Now follow the state road ST 2072 and the national road B 307. As soon as you see a sign showing you the way to Schliersee/ Fischhausen-Neuhaus, please follow this sign until you arrive at the parking site at the Josefstaler Strasse.



Dachau Concentration Camp Exterior



Castle Ruin Hohenwaldeck



Castle Ruin Hohenwaldeck

## The Ruins of Hohenwaldeck Castle

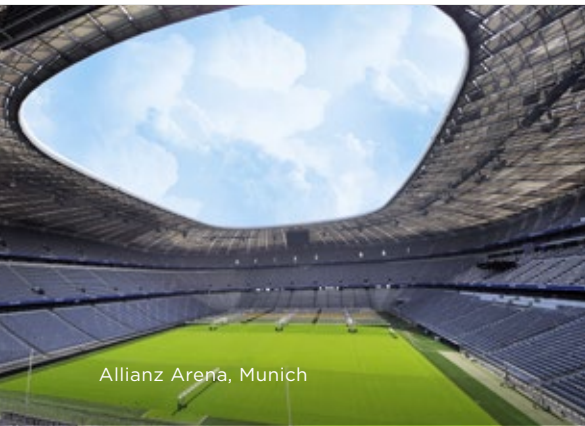
Approximately 470 metres east of the southern part of Schliersee near the village of Neuhaus sit the ruins of Hohenwaldeck castle. The journey up to its 980-metre elevation offers some of the most picturesque views of Lake Schliersee and the surrounding peaks. The Veste was built towards the end of the 13th century by the Lords of Waldeck. The Waldeck were servants to the diocese of Freising but were able to build a largely independent rule after the construction of the spur castle. During the 16th century, the death of the last Waldecker in the hands of the Lords of Maxlrain had the castle change owners however by the time the somewhat violent exchange took place the castle was already slipping into disrepair after a rockfall destroyed much of the structure in 1480.

## Dachau

Located to the northeast of Munich, Dachau has a long history dating back as far as the 9th Century AD, however it's the notorious use of the town as a concentration camp during the tyranny and darkness of Nazi rule which has defined it since. The site has been renovated and preserved as a Holocaust memorial to those who suffered and died there between 1933 and its liberation in 1945. There are several tours from nearby Munich, although you can visit on your own using public transportation..



Allianz Arena, Munich



Allianz Arena, Munich



Huberalm View

## Huberalm & Huberspitz

Walk from the folk festival area in Hausham to the little stream called the Schlierach. Upstream the path will lead you towards Café Huberalm and then on to the track to Huberspitz. After enjoying a few local flavours walk on down the road until you reach the hiking path through the forest which will lead you to the mountain pastures of the Gindelalmen and the Gindelalmschneid. You'll be treated to a beautiful view to the alpine uplands.

## Allianz Arena

Catch some of the best football played anywhere on earth at Allianz Arena. FC Bayern Munich plays their home games at the stadium and it's something special to see a sea of red amongst the 75,000 capacity stands. The Bundesliga season runs from August to May and attending an Autumn home game is somewhat of a tradition for the locals.





Slyrs Distillery



Slyrs Distillery



Slyrs Distillery

## Slyrs and Lantenhammer Distilleries

In the picture-postcard town of Schliersee, Slyrs distillery arguably makes Germany's best single malt whisky - Slyrs. While just under 10 kilometres away, Lantenhammer distillery produces distilled delights including brandies, fruity liqueurs, and Bavarian gin, as well as jams, glassware, gift packs and other specialities.

Both are run by the third generation Stetter family and both are within easy reach of Karma Bavaria which is perched (somewhat fortuitously) half-way between the two.

There are plenty of organised tours at both distilleries during which you can enjoy tasting the whisky or Williamsbirnenbrand (Williams pear schnapps), a Mirabellenbrand (mirabelle plum brandy) and a Waldhimbeergeist (forest raspberry schnapps), as well as spirits made from blackcurrants, strawberries, sour cherry, and apricot nectar.

The Stettens use only hand-picked juices and nectars from tree-ripened fruit. The result is a concentrated delightfully fruity taste.



Schliersee, Bavaria, Germany



Obere Firstalm



Obere Firstalm

## Obere Firstalm

Obere Firstalm is one of the more well-known mountain inns in the Bavarian Alps and offers visitors to the region an authentic slice of Bavarian Alpen life. The Firstalm lies at the end of a valley running between Brecherspitz in the north and Stümpfling in the south and is about 2.5 kilometres from Spitzingsee. The area's uber-green meadows and surrounding hiking trails are ideal for families with children and people that enjoy a more leisurely walk as opposed to adrenalin inducing mountain hiking.

## Schliersberg Alpine Hut

The Schliersberg Alpine hut is one of the most popular tourist attractions in the Schliersee region. The hotel and its restaurant lie near the summer sledge run making it an ideal place to rest before you begin your next run down! Visitors to the hut can either walk or take the cable car, which has been in operation since 1952. Departure times are between 8.30 am and 10.00 pm daily, and cabins leave every 15 minutes from Schliersee to mount Schliersberg and back. If you prefer to travel by car, head along Autobahn A8 from Munich-Salzburg, exit at Weyarn and follow the signs to Schliersee and the valley station. You can park your car at the valley station and hop onto the cable car to the Schliersberg Alpine hut or walk the hiking path. The trip will take approximately an hour. The restaurant and beer garden serves regional and national specialities using locally sourced certified organic ingredients. Many day-trippers travel up the mountain just for a good meal with spectacular views.

We look forward to welcome you to Karma Bavaria. We remain at your disposal for any additional information to help you plan your stay. Do not hesitate to contact us at

[info@karmabavaria.com](mailto:info@karmabavaria.com)



Castle Neuschwanstein



**KARMA BAVARIA**

Kirchbichlweg 18, 83727 Schliersee, Germany

E : reservation@karmabavaria.com

T :+49 (0) 80 26 60 80 • +49 (0) 80 26 60 86 87

**KARMAGROUP.COM**